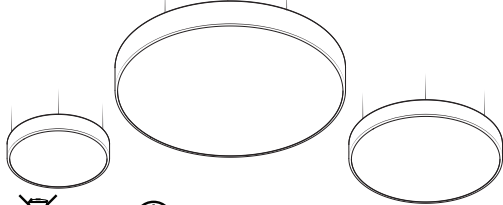


Full Moon 400 / 600 / 900 Suspended



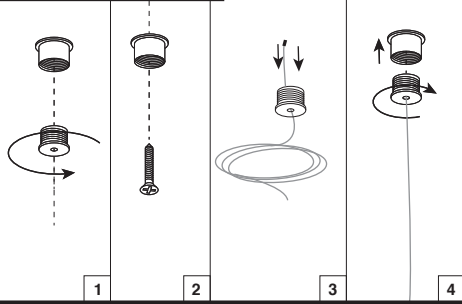
Instructions:

- A1. Disassemble ceiling fixation
- A2. Fix ceiling fixation to ceiling using screws
Make sure to use the correct screws, plugs, etc. required for the specific ceiling type.
- A3. Pull steel wire trough bottom part of ceiling fixation
- A4. Reassemble ceiling fixation
- B1. Screw wiregripper onto thread on top of housing
- B2. Put wire into wire locks
- B3. Pull wire through wire locks
- B4. Adjust height by pressing on wire lock and cut off excess wire
- C1. Disassemble mounting box
- C2. Fasten mounting piece with screws
- C3. Fasten strain relief
- C4. Assemble mounting box pieces
- C5. Place strain relief /connect 230V
- C6. Assemble mounting box
- D1. Remove protective foil ON BOTH SIDES of the diffuser.
- D2. Insert diffuser into housing. Bend diffuser slightly and place inside housing.

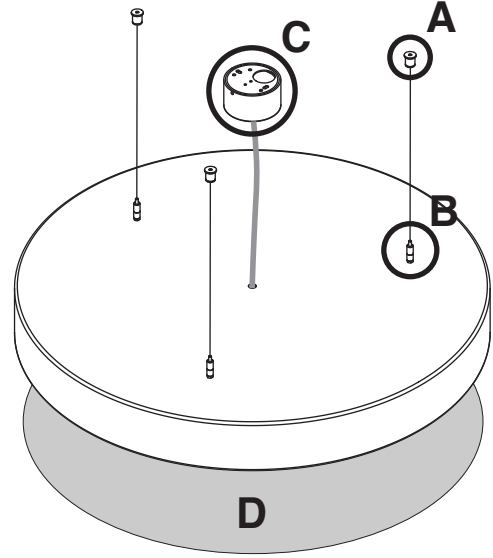
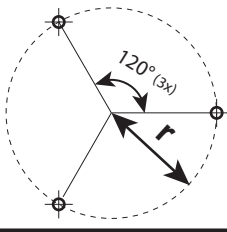
DOXIS
LIGHTING FACTORY

Doxis Lighting Factory cannot be held responsible for damage caused by incorrect installation.

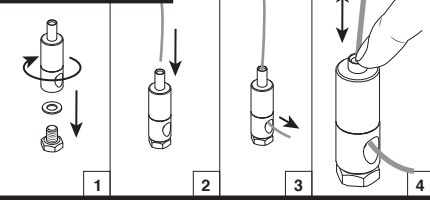
A: Ceiling mounting



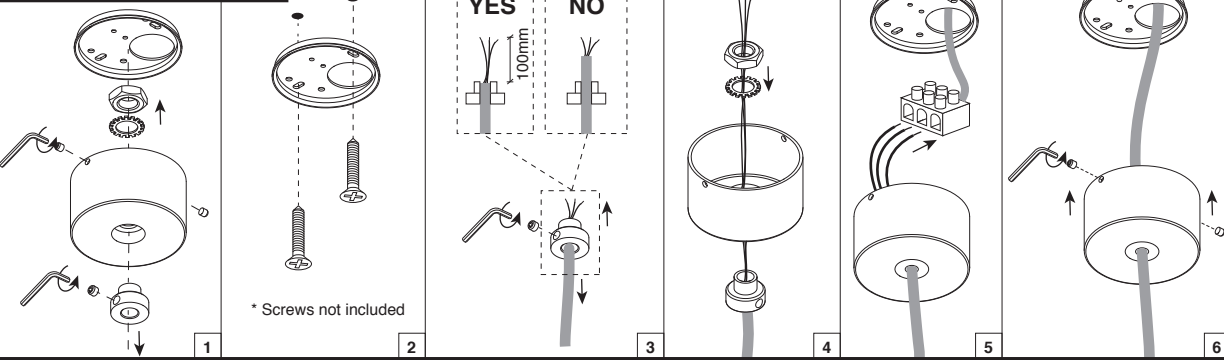
Mounting hole locations
r = Radius
Full Moon 400: r=172mm
Full Moon 600: r=206mm
Full Moon 900: r=206mm



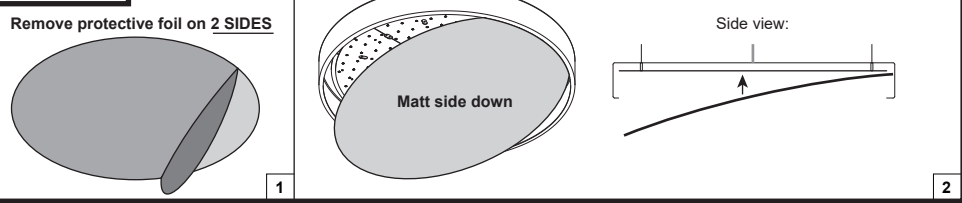
B: Suspension



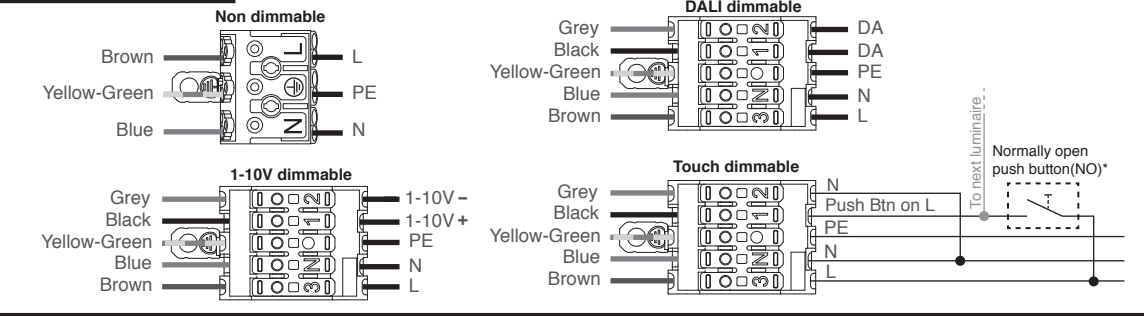
C: Ceiling connecting box



D: Diffuser



Electrical connection



⚠ Attention!!

Always follow the instructions described in this document and store this document for future reference.
Do not touch LED surface. Warranty void if LED contact has taken place.
Only to be installed by a qualified electrician.
Always make sure power is completely switched off when working on luminaire.
Doxis Lighting Factory NV cannot be held responsible for any damage caused by incorrect installation, modification, reparation or incorrect application/usage of the product.